

# Fiber Cement Board

“Fire Class A1  
Fast and Easy Application”



# From The Master of Cement Board

## Wood Texture > Fiberwood

## Stone Texture > Fiberstone

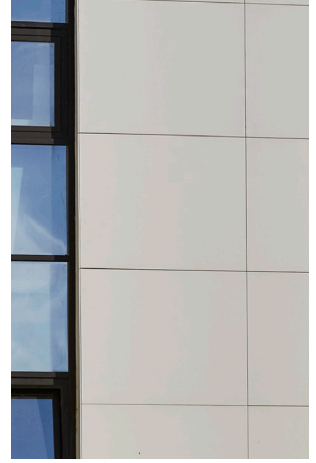


Reference  
Projects

### Advantages of Use

Protects sub-construction system,  
Dirt proof,  
Environment friendly,  
Does not contain any harmful substances to health,  
Asbestos free,  
A1 Fire Class,  
Does not release toxic gas during the fire,  
Resistant to moisture and water,  
Resistant to the effects of sunlight,  
Resistant to seasonal changes,  
Easy assembly and modification procedures,  
Easy to cut,  
A finishing material,

Extends and protects the life of insulation material when used in heat and sound insulation systems,  
No paint required,  
Has feature of water repellent,  
It is odorless and does not release toxic gas,  
Resistant to impacts,  
Resistant to biological and chemical wastes,  
Easy to carry, light weight,  
Insect-proof, non-putrescible, no molding,  
Offers different solutions in all areas of building projects,  
Creates facades and surfaces compatible with fire regulations,  
Can be used with insulating material of any desired thickness,  
Can be used in fine details with smooth cutting surfaces,  
Very high impact resistance compared to gypsum based boards.



### Standard Dimensions

#### Thickness

4 - 6 - 8 - 10 - 12 - 14 mm

#### Dimensions

1250 x 2500 mm

1250 x 2800 mm

1250 x 3000 mm

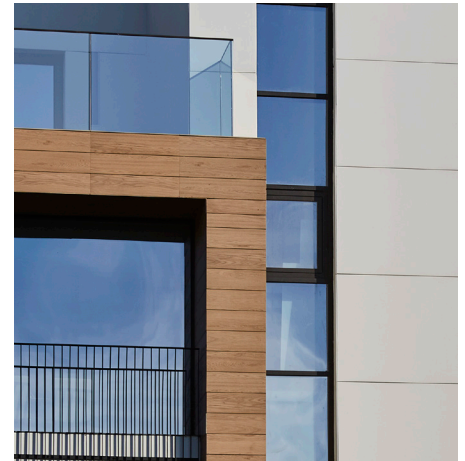
### Technical Specifications

Density	1150 ± 75 kg/m <sup>3</sup>
Elastic Modulus of Bending	≥ 7 (ort. 10-11) N/mm <sup>2</sup>
Bending strength	≥ 4000 N/mm <sup>2</sup>
Durability Classification	Category A, Class 2
Resistant to Fire Class	Non-combustible, fire class A1 building material in according to EN 13501-1

### Areas of Application

Construction of interior and exterior walls of all kinds of buildings,  
In ventilated facade systems,  
Insulated and plastered cladding systems,  
All surfaces in prefabricated and light steel structures,  
Structural sections made of steel construction,  
As the finishing material by just painting,  
All kinds of coating, wall paper or backerboard of ceramics on facades and interior surfaces,  
Back of tiles in wet spaces,  
Indoor and outdoor ceiling applications,

In suspended ceiling systems,  
Construction of fire wall,  
In areas where sound insulation is required,  
In thermal insulation systems,  
Backer board of roof covering materials,  
As backing material of cabinets or panels ,  
On walls, parapets and ceilings of balconies and terraces,  
Soffit and fascia cladding,  
Steel column and fake column cladding,  
Application of boundary fences at construction site,  
On shaft walls.



**Merkez / Head Office**  
**Betopan Fabrika / Factory**  
Beytepe Köyü Yolu No: 5  
06800 Bilkent / Ankara / TR  
T: +90 312 266 45 51 pbx  
F: +90 312 266 01 50

**Tepepan Fabrika / Factory**  
Alcı Mah. ASO 2. ve 3. OSB  
2026. Cad. No: 12  
06909 Sincan / Ankara / TR  
T: +90 312 266 57 91 pbx  
F: +90 312 266 01 50